



INDOFINE Chemical Company, Inc.

121 Stryker Lane, Bldg. 30, Suite 1 • Hillsborough, NJ 08844 • U.S.A.

Phone: (908) 359-6778 • FAX: (908) 359-1179

website: www.indofinechemical.com

e-mail: chemical@indofinechemical.com

CERTIFICATE OF ANALYSIS

Cat No.: K-102

Product: **KAEMPFEROL**
(3, 5,7,4' -Tetrahydroxyflavone; Robigenin)

Cas Number: [520-18-3]

Lot Number: 1101116

Chemical Formula: C₁₅H₁₀O₆

Molecular Weight: 286.24

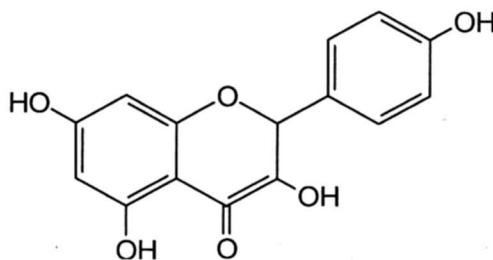
Melting Point 276-278°C

Appearance: Yellow powder

Solubility: Soluble in DMSO

TLC: Chloroform : Methanol (9:1)

Purity (HPLC): 99.89%





INDOFINE Chemical Company, Inc.

121 Stryker Lane, Bldg. 30, Suite 1 • Hillsborough, NJ 08844 • U.S.A.

Phone: (908) 359-6778 • FAX: (908) 359-1179

website: www.indofinechemical.com

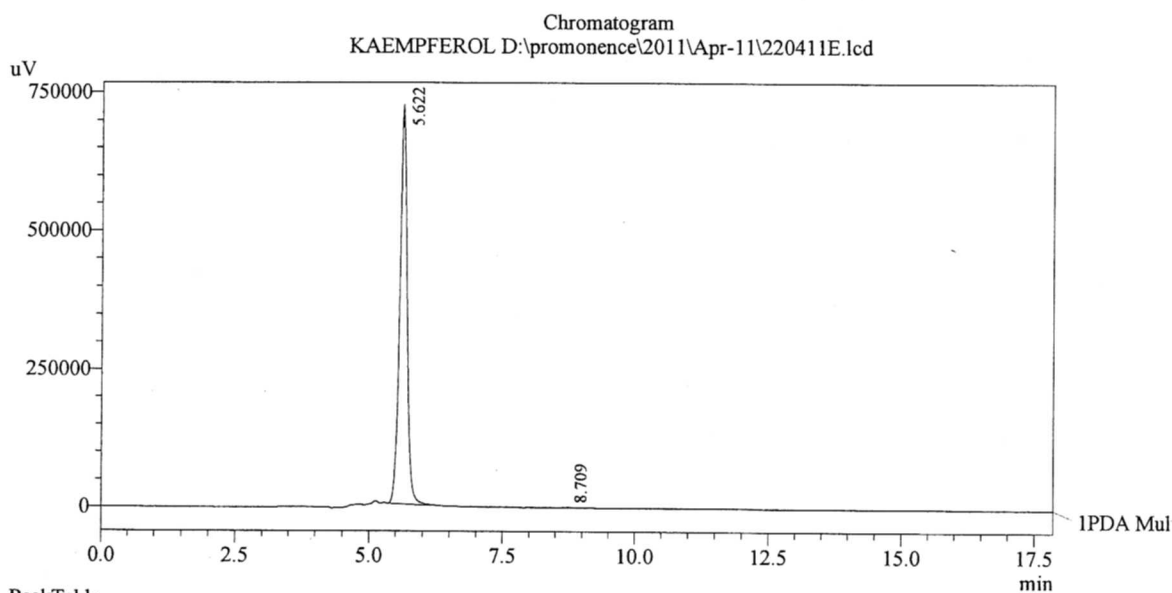
e-mail: chemical@indofinechemical.com

HPLC ANALYSIS

Date Acquired : 4/22/2011 10:34:24 AM
Acquired by : Madhuri
Sample Name : KAEMPFEROL
Sample ID : Lot No.: 1101116
Injection Volume : 20 uL
Data Filename : 220411E.lcd
Method Filename : Linear Isocratic.M.lcm

Cat. No.: K-102
Product name: Kaempferol
Lot No.: 1101116

Description:
Column : Phenomenex C-18, 250X4.6mm 5.0µm
Flow : 0.500ML/min.
Mobile Phase : A(20% of 0.05% of TFA) B(80% of Acetonitrile)



PeakTable
PDA Ch1 240nm 4nm

Peak#	Ret. Time	Area	Height	Area %
1	5.622	6935203	722363	99.891
2	8.709	7557	560	0.109
Total		6942761	722923	100.000